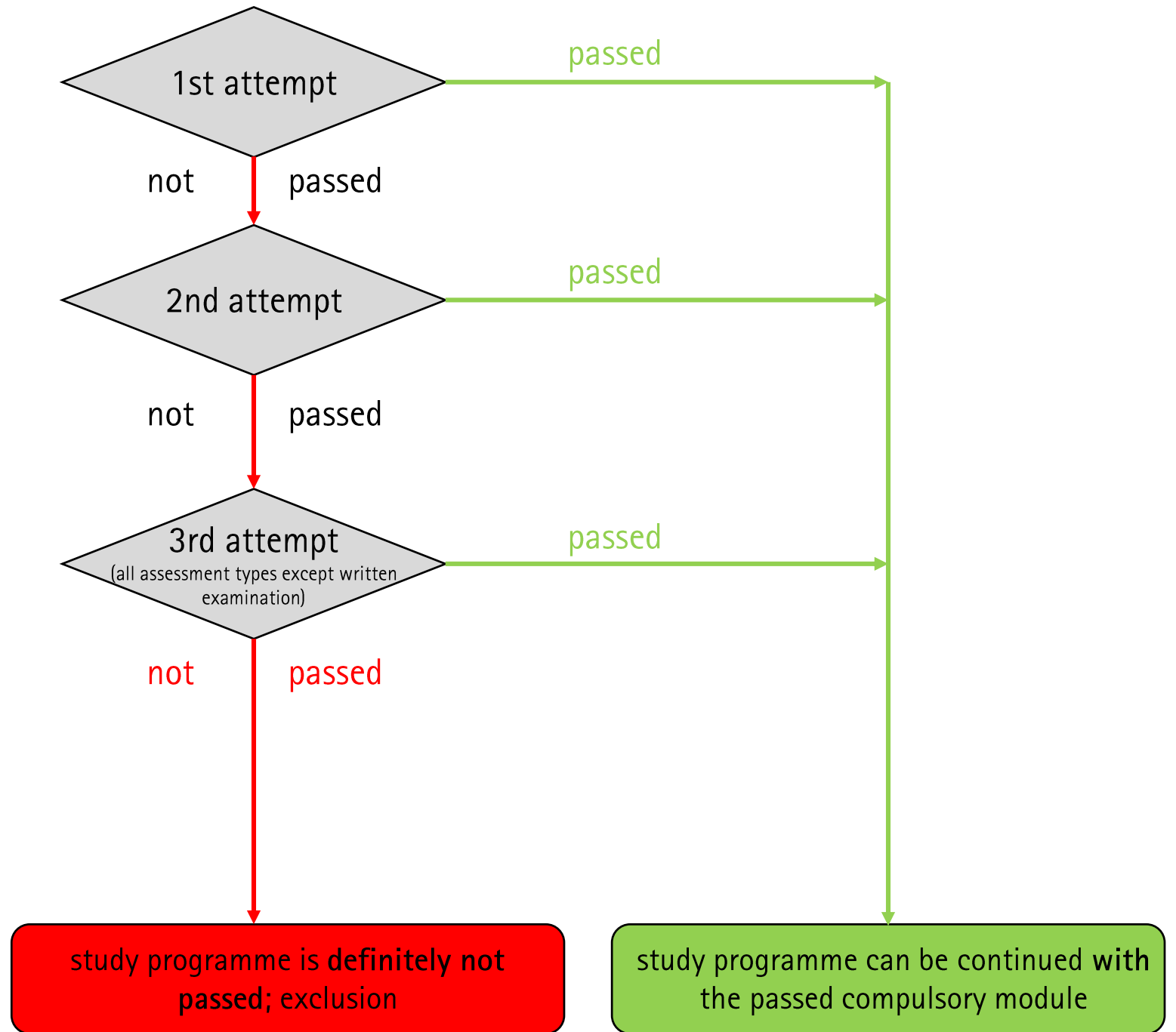


# Module Versions

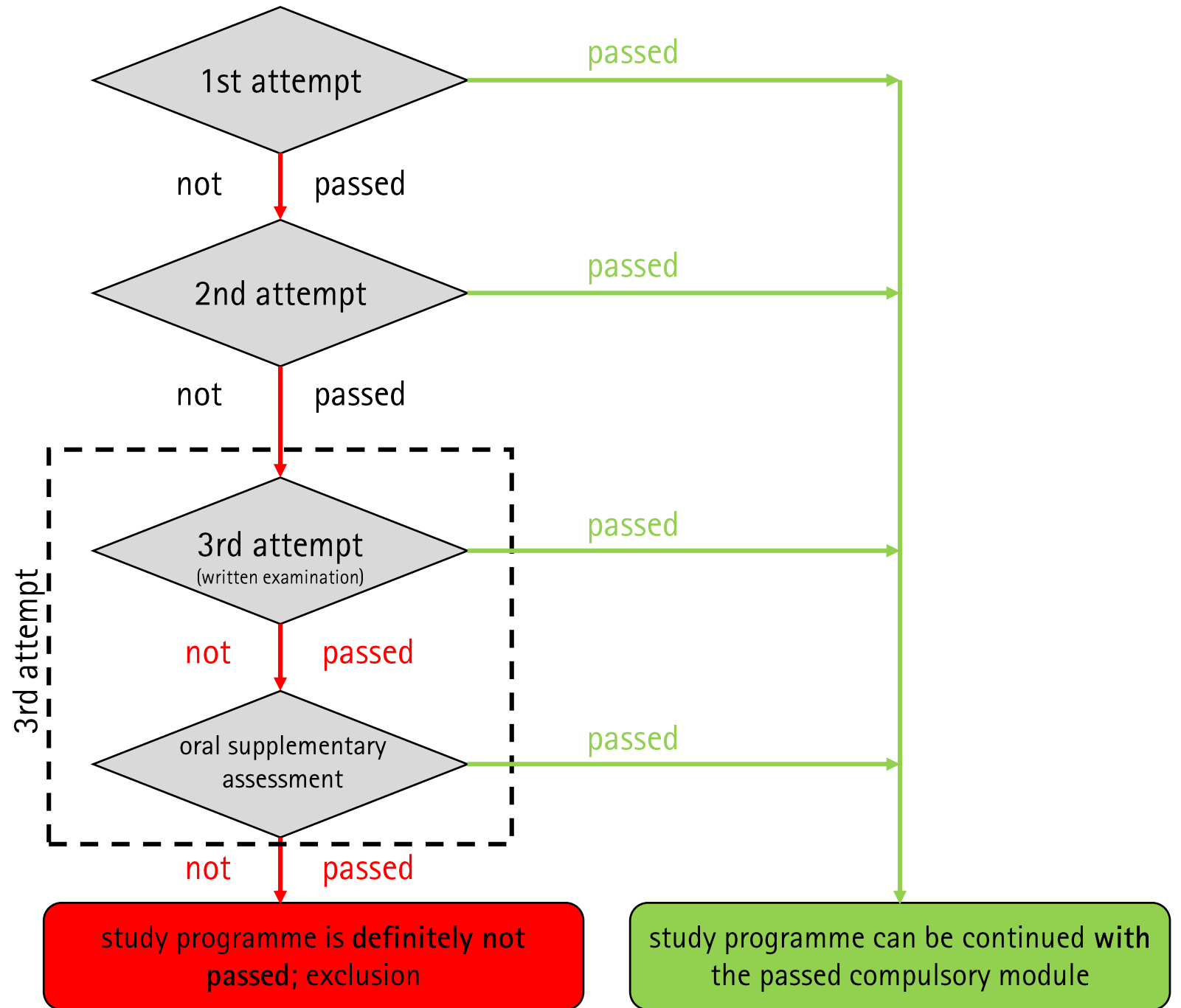
- Compulsory Module: A compulsory module must be passed in order to complete your studies successfully.
- Compulsory Elective Module: In a compulsory elective module you decide between 2 modules. You must then pass this module (just like a compulsory module) and cannot switch back.
- Elective Module: You can choose an elective module according to your interest. In case you do not pass the exam, you are free to choose another elective module and register for the exam again. The three attempts then count from the beginning.

Attention: Depending on the study programme, modules can sometimes be compulsory modules, sometimes compulsory elective modules or sometimes elective modules. Please check the category the module you have chosen belongs to in your study programme at the beginning of the semester.

# Compulsory Module With Assessment Type At 3rd Attempt $\neq$ Written Examination

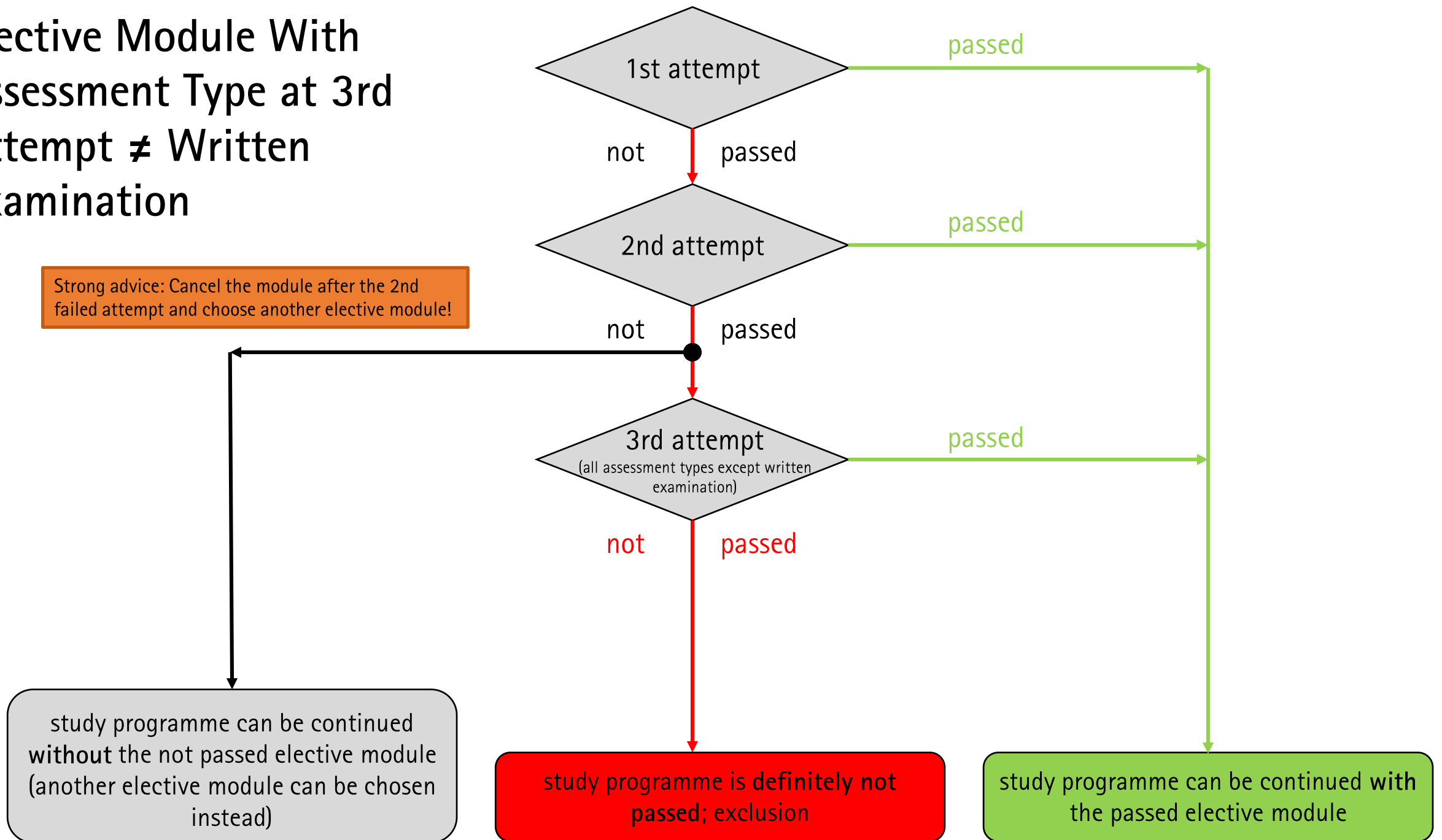


# Compulsory Module With Assessment Type At 3rd Attempt = Written Examination



# Elective Module With Assessment Type at 3rd Attempt $\neq$ Written Examination

Strong advice: Cancel the module after the 2nd failed attempt and choose another elective module!



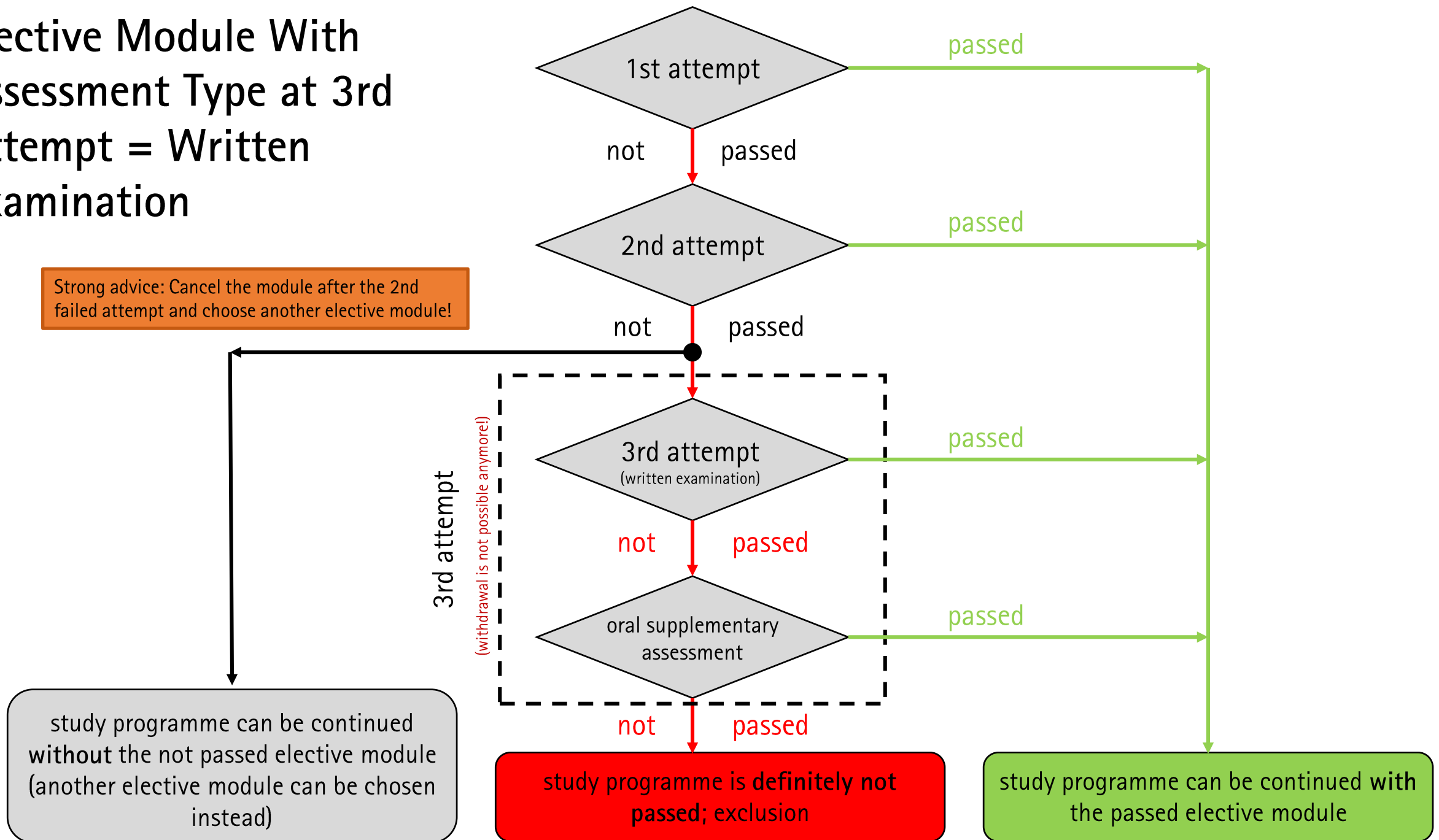
study programme can be continued without the not passed elective module (another elective module can be chosen instead)

study programme is definitely not passed; exclusion

study programme can be continued with the passed elective module

# Elective Module With Assessment Type at 3rd Attempt = Written Examination

Strong advice: Cancel the module after the 2nd failed attempt and choose another elective module!



study programme can be continued without the not passed elective module (another elective module can be chosen instead)

study programme is definitely not passed; exclusion

study programme can be continued with the passed elective module

# Information About The Oral Supplementary Assessment

## Scheduling

- The date is set by the examiner (scheduling with students is not required, but is recommended by the Dean of Students Office).
- The supplementary examination usually takes place within 6 weeks after the announcement of the exam result.
- The written summons is sent by the Academic Examination Office and must be sent to the students at least 3 weeks in advance.
- An abbreviated summons is permitted only with the written consent of the student.
- In case of a renewed written summons due to valid reasons (e.g. inability to take the examination), which must be notified in writing and made credible, the summons period shall be shortened.

# Information About The Oral Supplementary Assessment

## Content And Duration Of The Examination

- The content of the supplementary examination refers to the content of the preceding written examination (3rd attempt).
- The oral supplementary examination should not exceed a maximum duration of 20 minutes.

## Assessment

- After successful completion of the supplementary examination, the examiner can only give the grade '4.0' or, in the case of ungraded examination performances, 'passed'.